

Marine turtles are threatened with extinction at a worldwide level. In French Guiana they have been fully protected by law since 1991, and this is why there are many rules and guidelines to be respected.

Light-pollution: what are the consequences to marine turtles?

Coastal development brings lights, camera flashes, traffic, and activity to the nesting beach, and these can have a very negative impact on marine turtles.

Under natural conditions, turtles orient themselves to the bright, open horizon of the sea : artificial lights and disrespectful behavior from some visitors create an inconvenience that can have several consequences, such as:

- > dissuading marine turtles from coming ashore and encouraging them to turn back without laying their eggs
- > disrupting and even interrupting the nesting process, including shortening the time dedicated to camouflaging the nest
- > disorienting egg-laden females, as well as hatchlings, which can increase the risk of death by exhaustion, dehydration and predation

Inside this brochure you will find some advice on how to reduce this impact, and on how to observe a marine turtle without making a disturbance.



For more information on solutions to reduce light-pollution, please contact Kwata association at:

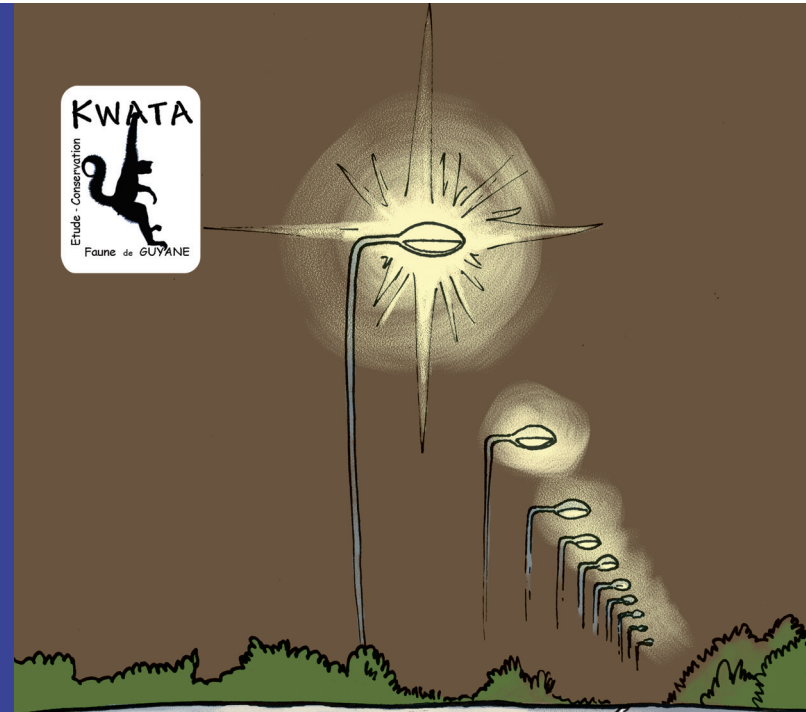
Phone: 05 94 25 43 31
Mail: kwata@nplus.gf
Website: www.kwata.net

©2009

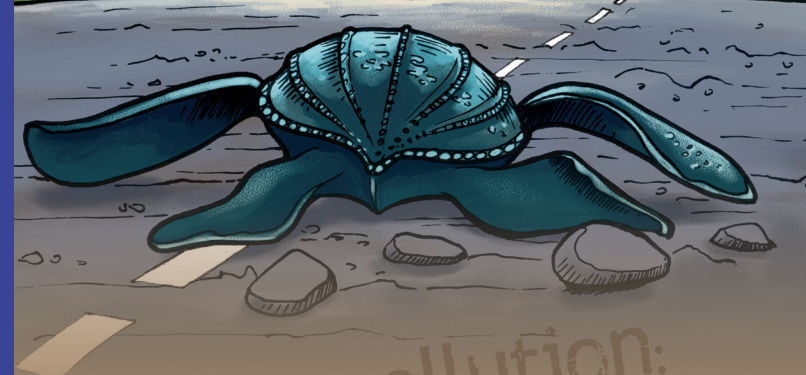
Text and conception: Maily's Cancel, Kwata association
Graphics and illustrations: Anne-Cécile Boutard



Reducing threats to marine turtles on their nesting beaches is required by the national sea turtle recovery plan in French Guiana.



Please do not litter. Dispose of this leaflet properly.



Light-pollution: a serious threat to marine turtles





How to observe a marine turtle without disrupting it

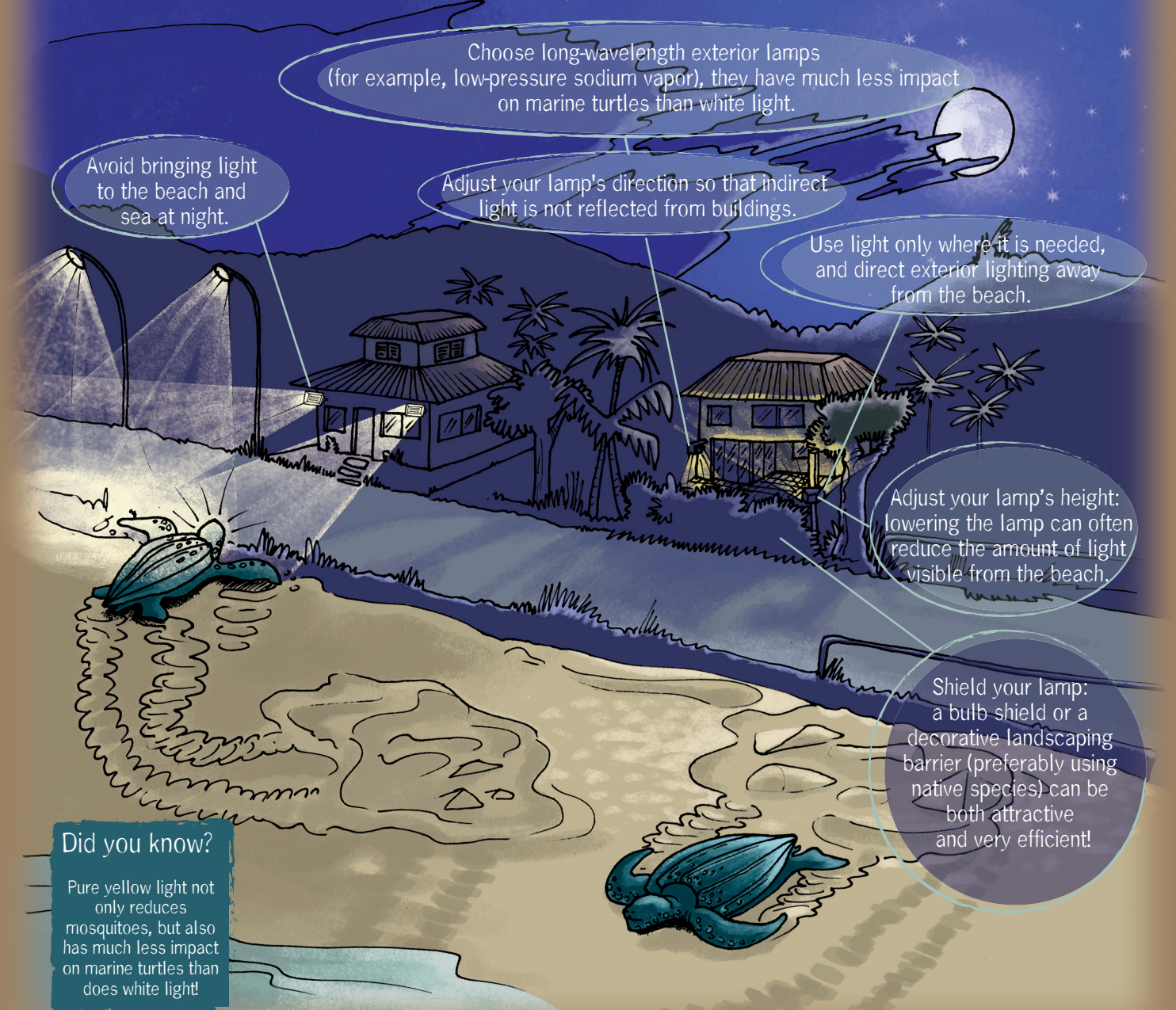
On the beach, try to guide yourself with natural light. Keep your flashlight turned off! Even from far away, a single flashlight may be enough to disorient a turtle.

Camera flashes also disturb turtles. Visit the nesting beach early in the morning or late in the evening, if possible during the high tide. If you encounter a turtle at this time, the picture will be even more beautiful and the turtle less bothered.



How to minimize light-pollution when living on the coast

There are many simple and inexpensive ways to reduce light-pollution near nesting beaches. Each one of us can help!



Did you know?

Pure yellow light not only reduces mosquitoes, but also has much less impact on marine turtles than does white light!